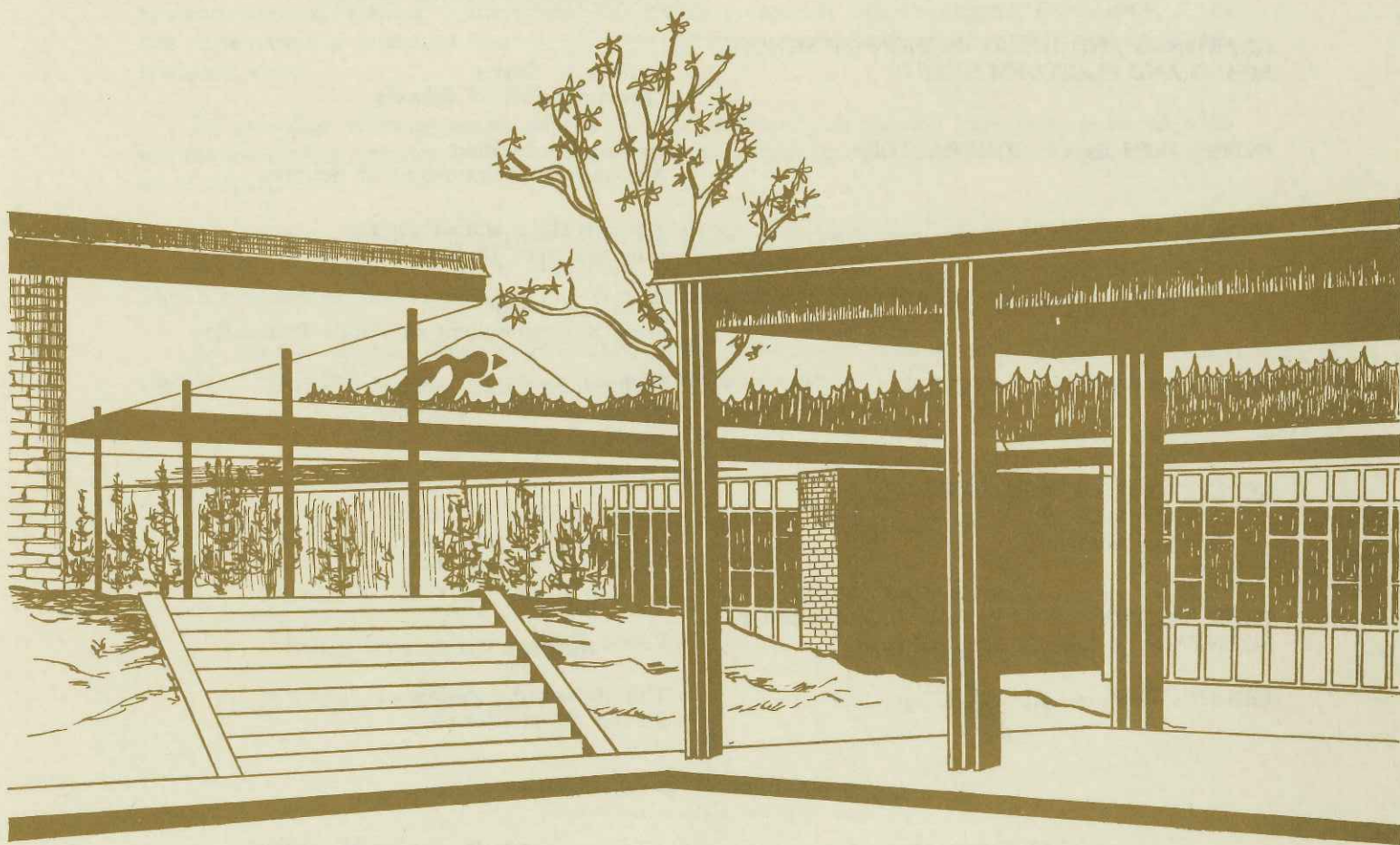


SEHOME
HIGH SCHOOL
DEDICATION
AND
OPEN HOUSE



BELLINGHAM SCHOOL DISTRICT NO. 501

SEPTEMBER 10, 1967

DEDICATION PROGRAM

SEPTEMBER 10, 1967

4:00 P.M.

Gordon L. Carter, Superintendent of Schools, Presiding

PRELUDE	Sehome High School Band Charles Trentman, Director
FLAG SALUTE	John Stimpson
NATIONAL ANTHEM	The Audience, with Sehome High School Band, Led by Charles Trentman
INVOCATION	The Reverend Glenn Carlson St. James Presbyterian Church
GREETINGS AND INTRODUCTION OF SCHOOL BOARD AND PLATFORM GUESTS	Gordon L. Carter Superintendent of Schools
INTRODUCTION OF CONTRACTORS	Harlan W. Jackson Assistant Superintendent of Schools
CHORAL SELECTION	Sehome High School Chorus Dale Mattson, Director
DEDICATION ADDRESS	Dr. Louis Bruno State Superintendent of Public Instruction
PRESENTATION OF BUILDING	Richard Stradling, Architect, A.I.A., to Douglas Blair, President, Board of Directors
ACCEPTANCE OF BUILDING For the Staff	Ronald Dahlin, Principal
For the Students	Gary Hatch, President Associated Student Body
PRESENTATION OF JAMES W. DAVIS MEMORIAL FOUNTAIN	Vance Clark
BENEDICTION	The Reverend Jan Bogusz Sacred Heart Church

United States Flag	Senator Henry M. Jackson
Freedom Shrine	Exchange Club
School Flag	Kulshan Kiwanis Club

MEMBERS OF THE BELLINGHAM SCHOOL BOARD

Douglas Blair, President	Mrs. Catherine May, Vice-President
Hal Arnason, Jr.	James Mason, M. D.
David Mintz	

DESIGN FOR LEARNING

Today we are enjoying the fruits of the labor of many over a period of nearly ten years. In 1958, at the request of the School Board, a group of community leaders formed the High School Commission. The Commission's report recognized the need for expanded high school facilities and recommended a four year high school organization. In the spring of 1963, the community heavily supported a bond issue to provide funds for the construction of Sehome High School.

The building was first visualized in the minds of teachers . . . those who served on the committees making decisions about the building and its contribution to the young learner. Now we see a facility of wood, steel, glass and brick which has been fashioned by the hands of skilled craftsmen from the architect's plans.

Sehome High School has been constructed for long wear and ease of maintenance with a pleasant teaching-learning environment. The building complex fits the original topography of the site. The physical education, industrial arts and music classrooms are separated from the quieter academic areas.

By grouping teaching areas around courts, protected passageways have been provided without the expense of interior halls. Conference rooms and student project areas are found throughout the building.

Flexibility is possible through folding partitions and large and small instructional areas. Non-bearing partitions will allow classroom changes dictated by the curriculum of the future. The library-study center is located so that additional classrooms may be added to the north.

As you visit Sehome High School today, consider the impact that the facility will have on the learner. That, after all, is the test of an educational design.

GENERAL CONTRACTOR	Eiford Construction Company
MECHANICAL CONTRACTOR	Snelson, Incorporated
ELECTRICAL CONTRACTOR	Carl T. Madsen, Incorporated

COST OF BUILDING, EQUIPMENT AND SITE

Local Funds	\$3,239,969
State Funds	529,200
Federal Funds	65,983
TOTAL COST	\$3,835,152

It is to the students of
Sehome High School, present
and future, that this building
is dedicated



to the end that young people may
learn about themselves and the
world in which they live,
our community has worked
to create this high school.

